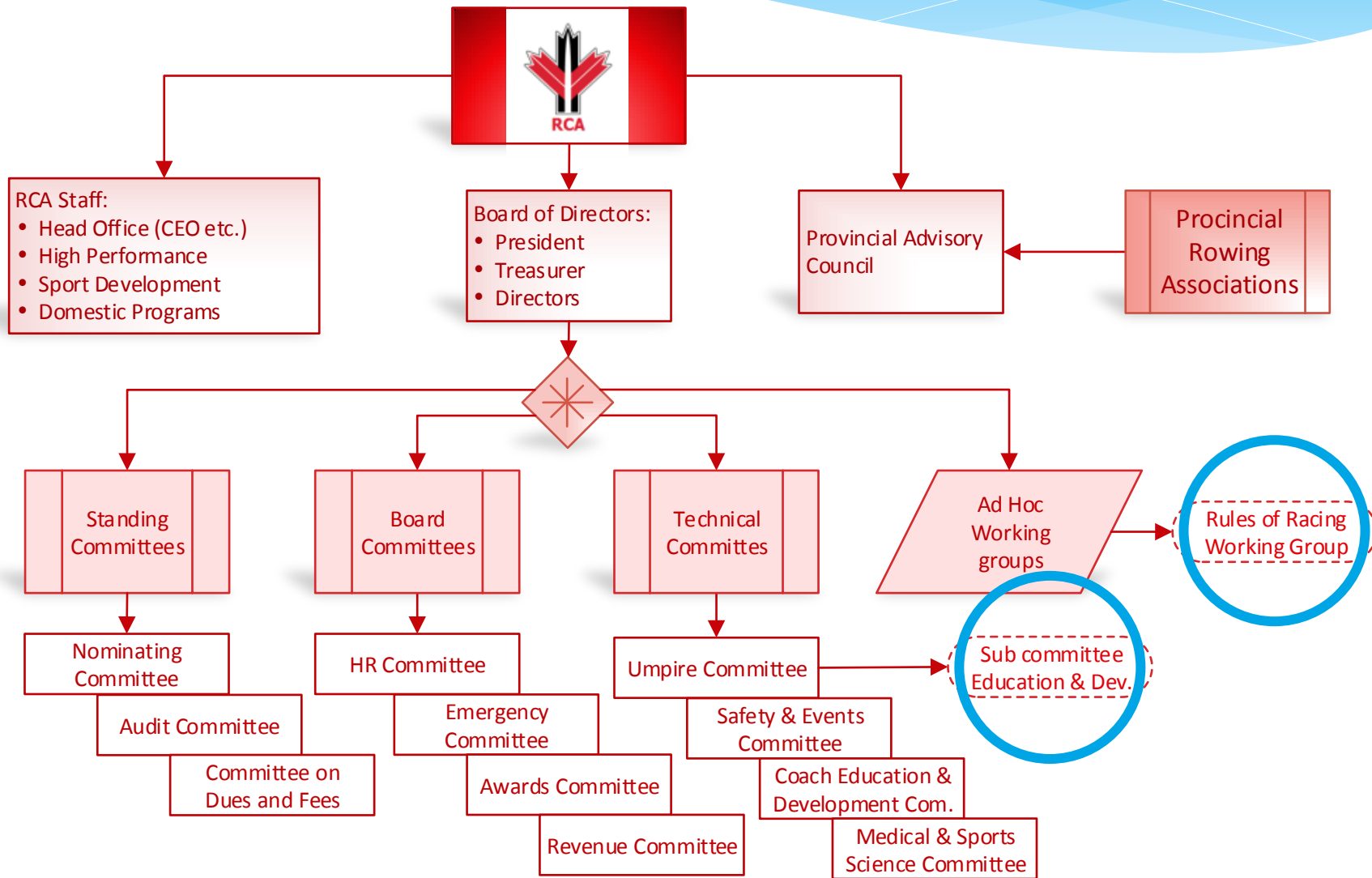


# Umpire Education & Development

RCA Umpire Education & Development sub-committee



# RCA Governance



# Sub-committee Education & Development

## *MEMBERS*

- \* Sandy Kirby (Chair; RCA UC)
- \* Errol Bosman
- \* Donna Bliss
- \* Ge-an Rijniersce
  
- \* Much work done by previous committee members
  - \* clinics,
  - \* practical exercises
  - \* mentored regatta opportunities
  - \* either evaluation or self-evaluation for all levels.

# Sub-committee Education & Development

## TRAINING MATERIAL



# Level 1

## *ASSISTANT UMPIRE*

- \* First steps into umpiring
- \* Four hour course to go through the work of all stations
- \* Focus on:
  - \* Control Commission
  - \* Judge at the Start
  - \* Start
  - \* Finish Judge
- \* After the course:
  - \* Assistant Umpire
  - \* Get mentoring at the four stations listed

# Level 2

## *UMPIRE*

- \* Next steps into umpiring
- \* Eight hour course to go through the work of all stations
- \* Re-iteration:
  - \* Control Commission
  - \* Judge at the Start
  - \* Start
  - \* Finish Judge
- \* Focus on:
  - \* Race Umpire

# Level 2

## *UMPIRE*

- \* Associate Umpire
- \* Mentoring on all stations by licensed umpires
- \* With clinician approval:
  - \* Could work individually certain tasks (eg. Control Commission)
  - \* Exception for Race Umpire, always work with mentor
- \* Associate keeps track of umpiring done
- \* CUs asked to sign off on tracking sheet
- \* Associate will decide when they're ready for the exam
- \* Take exam to become fully licensed

# Level 3

## *CHIEF UMPIRE*

- \* Clear understanding and proficient application of the Rules of Racing
- \* Six hour course to go through specific Chief Umpire tasks
- \* Focus on:
  - \* Introduction to Sanctioning
  - \* Interaction with OC
  - \* Decision making
  - \* Trouble shooting & problem solving
  - \* Communication & People management skills
  - \* Risk Management



# Level 3

## *CHIEF UMPIRE*

- \* Associate Chief Umpire
- \* Mentoring by Chief Umpires or clinicians
  
- \* Associate Chief Umpire to indicate when ready
- \* Take exam to become Chief Umpire

# Level 4

## CLINICIAN

- \* Give Level 1,2, 3 training
- \* Mentor Level 1,2, 3 umpires
- \* Attend a clinician workshop
- \* Appointed by RCA Umpires committee
- \* RCA Umpire Committee is developing requirements



Debbie

# Level 5

## *FISA/INTERNATIONAL UMPIRE*

- \* Umpire at International Regattas:
  - \* As ITO selected by FISA
  - \* As NTO selected by OC
  
- \* Clinic with RCA selected FISA umpires
- \* Mentoring with local FISA Umpires
- \* Confirmation with RCA UC that candidate is ready for exam
- \* Take FISA exam to become FISA Umpire

# Umpire Pathway

- \* **Level 1** Clinic → “Assistant Umpire”  
→ practical training period
- \* **Level 2** Clinic → “Associate umpire”  
→ practical training period  
→ Umpire examination → RCA Umpire (licensed)
- \* **Level 3** Clinic and training → “Associate Chief Umpire”  
→ practical training period  
→ Chief Umpire examination → Chief Umpire
- \* **Level 4** Clinic and training → Clinician  
(this step is separate entrance to Level 5)
- \* **Level 5** International umpire preparation program  
→ FISA Exam → [FISA/International] Umpire

*RCA licensed Umpires may  
act as mentors with Associates*

THANK YOU !

